



# Experimental Aircraft Association

Chapter 24

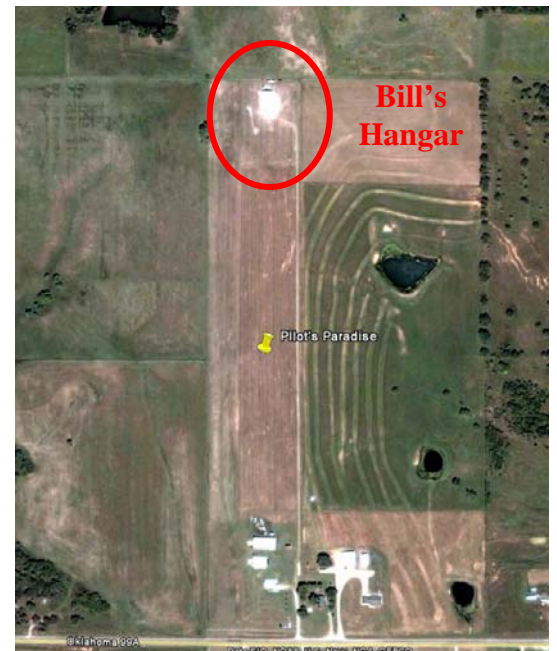
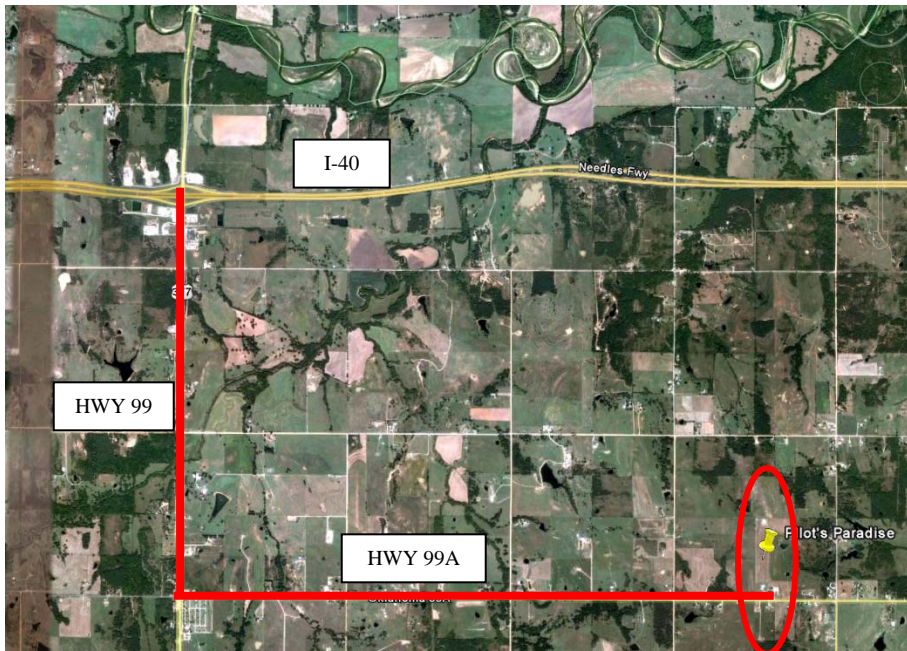
Oklahoma City, OK

November 2010



**\*\* NOTICE: \*\***

***December meeting location will be at Bill and Barbara Rickner's hangar located at Pilot's Paradise.***



**December Chapter meeting and Christmas lunch/Dinner.** It was decided our Christmas lunch would be combined with our December chapter meeting on December 4. Christmas dinner (lunch) will be at Barbara and Bill Rickner's hangar on Saturday December 4, starting about noon. Chapters 1098 and 24 are furnishing the meat and soft drinks. Chapter 98UL members are welcome and encouraged to attend. Attendee are asked to bring at least one of the following a covered dish, salad, pickles, olives, cheese, rolls, desserts, etc. For planning purposes, Barbara would appreciate you calling to RSVP and give the number of people in your party. Her number is 405-226-1081.

**Location:** Barbara and Bill's hangar home is on a private airport called Pilot Paradise It is not on the charts but if you want to fly in the Lat and Long is N 35.21.26 / W 96.36.54. It is a grass strip in good shape. The runway is about 2500 by 150. If you decide to fly in you are welcome but it is at your own risk. The general location of the place is north northeast of Seminole, OK and just south of I-40. The driving directions are from OKC take I-40 east and turn south at exit 200 (Highway 99) go about 2 miles south on Highway 99 then turn left onto Highway 99A and go about 3 1/2 miles east. You will see the airport on the north side of 99A. Barbara and Bill's hangar is near the northeast corner of the airport. Drive north on the driveway just east of the hangars.

## November Meeting Minutes

November, 2010. Meeting was called to order at 7:20pm by the Chapter President.

### Items of Discussion:

**December Chapter meeting and Christmas lunch/Dinner.** It was decided our Christmas lunch would be combined with our December chapter meeting on December 4<sup>th</sup>. Christmas dinner (lunch) will be at Barbara and Bill Rickner's hangar on Saturday December 4, starting about noon. Chapters 1098 and 24 are furnishing the meat and soft drinks. Chapter 98UL members are welcome and encouraged to attend. Attendee are asked to bring at least one of the following a covered dish, salad, pickles, olives, cheese, rolls, desserts, etc. For planning purposes, Barbara would appreciate you calling to RSVP and give the number of people in your in your party. Her number is 405-226-1081.

### November Program:



Thanks to Larry Eversmeyer for hosting our November meeting and taking the time to do a show and tell on his aircraft project. Another "Thank You goes out to Gary Blankenbiller for opening up his hangar and showing off his RV-10 aircraft.

Meeting adjourned around 9:30 with informal discussion that followed.

## November Guests

Guests Included:



**Ron Dellwo**



**Mark Jacobs**

Thanks for coming guys and come again anytime.

## NEW MEMBERS



**Doug Frantz**



**Don Miller**

## PRESIDENT'S COMMENTS

Big Thank You to Larry Eversmeyer and Gary Blankenbiller for our November meeting. The meeting was very informative and everyone seemed to get a lot out of it. Looking forward to a great 2011.

## DECEMBER PROGRAM

December program will be our annual Christmas luncheon/Dinner. Come enjoy the company.

## MISCELLANEOUS

### Line Up and Wait Phraseology Change

Beginning September 30, 2010, the words "Line Up and Wait" replaced the words "Position and Hold" to instruct a pilot to enter the runway to await take-off clearance. Under the new "Line Up and Wait" phraseology, the controller will:

State your call-sign, State the departure runway, and State "Line Up and Wait".

Exercise Caution. Be aware the phrase "Traffic Holding in Position" will continue to be used to advise other aircraft that traffic has been authorized to "Line Up and Wait" on an active runway.

**REMEMBER:** Never cross a hold line without explicit ATC instructions. You may not enter a runway unless you have been:

- Instructed to cross or taxi onto that specific runway
- Cleared to take off from that runway, or
- Instructed to "Line Up and Wait" on that specific runway.



### FAA Expected To Add Photos To Pilot Certificates

The FAA will publish a new proposed rule in the next few months that would require pilot certificates to include a photo, an FAA spokesperson said this week. Currently, pilots are required to carry a government-issued photo ID in addition to their pilot certificate. U.S. Rep. John Mica, R-Fla., recently wrote to the FAA, the TSA and the Department of Homeland Security asking why they haven't complied with a 2004 law that requires pilot certificates to include not only a photograph but a means to record biometric data such as fingerprints and iris scans. The FAA's Sasha Johnson said the FAA will release an NPRM by the end of this year. She also said that the current plastic certificates already are capable of holding biometric data, although no such data currently is required.

## MEMBER'S AIRPLANES

Be sure to start sending me pictures of your airplanes and/or projects and I will start putting them in the newsletter each month.



Herb Driskill  
1946 Ercoupe 415C



Herb Driskill  
1958 Cessna 175



Gary Manning  
Ercoupe 415C



Gary Blankenbiller  
Van's RV-10

*If you want a picture of your airplane published in the newsletter send me photos.*

## Young Eagles Events



**Upcoming Y/E events:** None Scheduled

**Upcoming Y/E Events will be discussed and finalized at each Chapter meeting**

Notify Pat Cohenour and let him know if you are planning on attending and flying, All of us and the young eagle kids would appreciate it.

### ***Young Eagle Volunteer Rules:***

*All participating pilots must be members of EAA and must hold an appropriate Airman's Certificate (Sport Pilot or greater)*

*Pilots must possess a current Medical Certificate (if applicable)*

*Pilots must be current to carry passengers in the aircraft they plan to use*

*Pilots must have a current Flight Review*

*Aircraft Passenger Liability Insurance is required for the aircraft used (owned, rented, or borrowed)*

*The Young Eagles registration form must be completed before the flight, including parent or guardian signature, and pilot signature.*

*The aircraft used for the flight must be in airworthy condition.*

*Flights must adhere to all applicable all applicable Federal Air Regulations (FARs)*

## CALENDAR OF EVENTS

1<sup>st</sup> Saturday of each month, Ponca City Fly-In Breakfast (KPNC), 8:00 – 11:00. Ponca City, OK

1<sup>st</sup> Saturday of each month, Pauls Valley Fly-In Lunch (KPVV), 11:00 – 2:00. Sponsored by the Antique Aircraft Association, Pauls Valley, OK

2<sup>nd</sup> Saturday, Ardmore Pancake Breakfast (KADM), Lakeland Aviation

3<sup>rd</sup> Saturday – Alva Regional Airport Fly-In Breakfast (KAVK)

4<sup>th</sup> Saturday – Enid Fly-In Breakfast, Woodring Airport (KWDG)

## PDF PLATES.COM

Need approach plates. You can get them on your smart phone, tablet PC, and any other number of handheld devices by going to: [www.pdfplates.com](http://www.pdfplates.com).

## DUES REMINDER

It's that time again. Start thinking about contacting Steve Schmitt concerning 2011 dues.

**NOTE:** *Nonmembers who are receiving this newsletter, if you want to become a member you can do so in two ways;*

1. Attend a meeting meet Stephen and he will enroll you.
2. Phone or mail Stephen and he will send you a membership application. Either way we would love to have you. Stephen's address and phone # is near the top of the page.

*If you are receiving this newsletter and are not a Chapter 24 member but would like to become one, please call or write to Steve Schmitt and he will send you an application. If you are a current EAA National member then all the Chapter requires is your completed application and \$15.00. We could use you as a member but member or not you are still welcome at our meetings.*

## CLASSIFIED SECTION

Looking for a pair of 6.00 x 6 wheels, tires, axels, brake discs, and calipers. Can be used, and/or old, as long as airworthy. They will be used on an experimental. - David Hines, Hatz CB-1,(405) 397-1663

1999 LANDOLL SKYDOLL • \$60,000 • LOST MEDICAL • MUST SELL! •  
1999 Landoll Skydoll (An RV8 modified) 0-540 Lycoming engine, electronic ignition, TruTrak auto pilot with altitude hold, Apollo GPS \$60,000.00 • Contact Mark Landoll - LANDOLL'S ELECTRICAL SERVICE, Owner - located Newcastle, OK USA • Telephone: 405 392- 3847



For Sale - Quicksilver MX1 (constructed in the 1990's) Rotax 447, 40 HP, Original fabric, new flying wires, new nose tire/tube and bearings. Instrument pod with altimeter/airspeed instruments, and Rotax engine instruments. Airframe rebuilt in 2007. Total time Engine/A/F: 105 hours. Make me an offer. (405)381-4680

For Sale - BRS 900 chute with brackets, lanyards, pull cable etc. Needs repack & rocket \$500.00 (save at least \$1,500. over price of new one). Air Classic CX2 pathfinder flight computer \$50.00. (405) 449-3610

For Sale – 1966 172G tailwheel conversion (Bolen Conversion #1 in 1979) with approx. 3750 TT, 450 SMOH, 110 SPOH. New mufflers in 05-2008, New Concord Sealed Lead Acid Battery 06-2010, Fresh Annual 06-2010. This is a fantastic airplane. I wish I could keep it, but I cannot afford to keep two airplanes. Asking price \$45,000. (405) 381-9387



**Disclaimer:**

The Oklahoma City, OK, EAA Chapter 24 is an official chapter of the Experimental Aircraft Association, Wittman Airfield, and Oshkosh, Wisconsin 54903-3086. Phone (414) 426-4800.

Chapter 24 was organized to promote aviation in the community, provide camaraderie, sharing of aeronautical knowledge and skills among those with interest in grassroots aviation and who share the objectives of the Experimental Aircraft Association.

Chapter membership is open to everyone, however our by-laws require that chapter members also be a member of the EAA national organization. Chapter dues are \$15.00 per year, payable on January 1.

Normally our meetings are held on the second Tuesday of the month at 7:15 P M at Metro Tech, 5600 S Mac Arthur Blvd., OKC. Time, date and place is subject to change. Please check your newsletter for current meeting information.

Newsletter Information: EAA Chapter 24 publishes the newsletter once a month. Its purpose is to inform. Members are encouraged to submit aviation and member related articles to the NLE.

Newsletter Editor (NLE):

Herb Driskill, Tel (405) 324-5672, Cell (405) 834-2124 EMAIL: [herb.driskill@faa.gov](mailto:herb.driskill@faa.gov)

**Chapter Officers**



**Herb Driskill**  
(President)  
Class I Director  
H (405) 324-5672  
C (405) 834-2124



**Paul Patterson**  
(Vice President)  
Class I Director  
C (405) 826-8443

(No Picture Available)

**Joe Russell**  
(Secretary)  
Class II Director  
H (405)-485-9764  
C (405)-553-2776



**Pat Cohenour**  
(Young Eagle Coordinator)  
Class II Director  
H (405) 495-1612



**Gale Braden**  
(Tech Counselor)  
Class II Director  
H (405) 242-4817  
C (405) 517-5665



**Steven Schmitt**  
(Treasurer)  
Class III Director  
H (405) 943-5758  
C (405) 831-4470



**Gary Manning**  
(Tech Counselor)  
Class III Director  
H (405) 793-1090



**Larry Eversmeyer**  
(Flight Advisors)  
H (405) 261-0270



**Mitch Williams**  
(Flight Advisors)  
C (405) 574-6842